

Ziatek® Tablet²CAD!

Digitizer Interface

The new, Ziatek® Tablet²CAD! is a wonderful solution for creating CAD drawings from a paper drawing or blueprint. It quietly runs in the background, and writes (x, y) coordinates directly into any computer drawing program as lines, arcs, circles, etc. are digitized quickly and without requiring calculations by the user.

This program can also be used to write coordinates to spreadsheets for unlimited special applications.

Third, the program can be set up in "triangulation mode" whereby it writes the area of each triangle that is digitized as three points at its vertices. While this has many possible applications, it is especially useful for determining earthwork quantities.

Refer to the publication on using triangulation as a clever way to get fast and accurate earthwork volume quantities!

Features

- Works in any scale. Drawing scale can even be measured with the digitizer when it is unknown.
- Units of measure can be selected from in, ft, yd, mi, mm, cm, m and km.
- The digitizer's stylus side switches or cursor buttons can be custom programmed with macros to execute a CAD program's commands without having to use the keyboard or mouse. When used with CAD programs, the coordinates are written as a comma-separated string, just like they are entered via keyboard.
- When used with a spreadsheet program, the coordinates are written to two columns, and the cursor is automatically placed on the next line under the first coordinate, ready for the next coordinate pair to be transmitted.

Benefits

- Far more economical than the cost of a scanner for "digitizing" paper images.
- Gets it right the first time – no error prone raster-to-vector conversion required!
- Digitize only the parts of the drawing that are needed.
- The spreadsheet interface can be used for any kind of post-processing of coordinate data. One example would be to compute the areas of complex polygons.
- The triangulation feature eliminates much of the tedium and complexity of using the traditions grid-cell method for earthwork takeoffs.

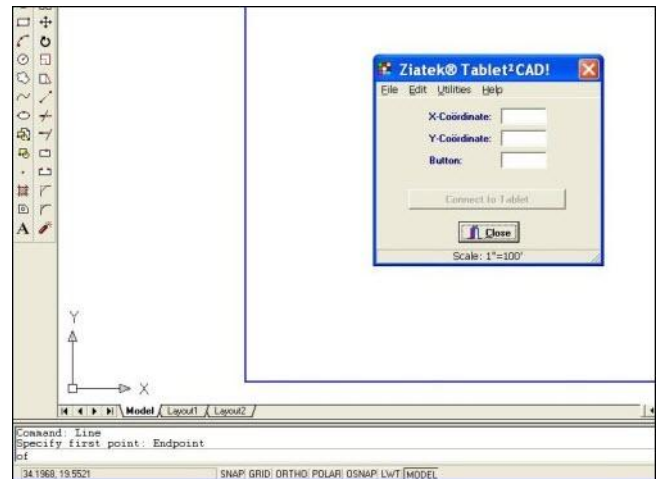
Applications

- Convert paper drawings to digital electronic drawings.
- Digitize artwork for stone, tile, glass, sheetmetal or other 2D material cutouts via CNC equipment.
- Perform accurate and fast earthwork takeoffs.
- Compute areas of complex polygons in a spreadsheet without expensive graphic software.

Refer to the publication that addresses how to compute areas and perimeters of complex polygons using Excel!

Hardware Requirements

- TabletWorks compliant digitizer, such as any of the GTCO/Calcomp models or other GTCO compatible digitizing tablets.
- USB or serial connection to the computer.
- Computer with *Windows*[™] 95, ME, NT, 2000, XP or Vista operating system.



Ziatek® Tablet²CAD! Importing coordinates to AutoCAD command line.

Distributed by: VectorTec

Tel: (866) 681-0320

Fax: (832) 201-9947

e-mail: sales@vectortec.com

website: www.Vectortec.com