

Ziatek® *Tablet²Excel!*

Digitizer Interface

The new, Ziatek® *Tablet²Excel!* is a wonderful solution for creating CAD drawings from a paper drawing or blueprint. It quietly runs in the background, and Calculates (x, y) coordinates or writes them directly into Excel Spreadsheets.

Refer to the publication on using triangulation as a clever way to get fast and accurate earthwork volume quantities!

Features

- Works in any scale. Drawing scale can even be measured with the digitizer when it is unknown.
- Units of measure can be selected from in, ft, yd, mi, mm, cm, m and km.
- When used with a spreadsheet program, the coordinates are written to two columns, and the cursor is automatically placed on the next line under the first coordinate, ready for the next coordinate pair to be transmitted.

Benefits

- Far more economical than the cost of a scanner for "digitizing" paper images.
- Gets it right the first time – no error prone raster-to-vector conversion required!
- Digitize only the parts of the drawing that are needed.
- The spreadsheet interface can be used for any kind of post-processing of coordinate data. One example would be to compute the areas of complex polygons.

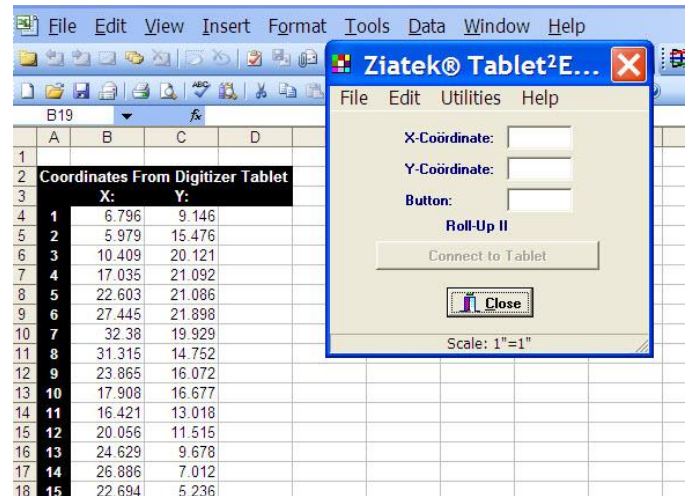
Applications

- Convert paper drawings to digital electronic drawings.
- Digitize artwork for stone, tile, glass, sheetmetal or other 2D material cutouts via CNC equipment.
- Compute areas of complex polygons in a spreadsheet without expensive graphic software.

Refer to the publication that addresses how to compute areas and perimeters of complex polygons using Excel!

Hardware Requirements

- TabletWorks compliant digitizer, such as any of the GTCO/Calcomp models or other GTCO compatible digitizing tablets.
- USB or serial connection to the computer.
- Computer with *Windows™* 95, ME, NT, 2000, XP or Vista operating system.



Ziatek® Tablet²Excel! with coordinates in a spreadsheet using a digitizer tablet.

Distributed by: VectorTec

Tel: (866) 681-0320

Fax: (832) 201-9947

e-mail: sales@vectortec.com

website: www.Vectortec.com